

# Map of Specified Gulf Waters



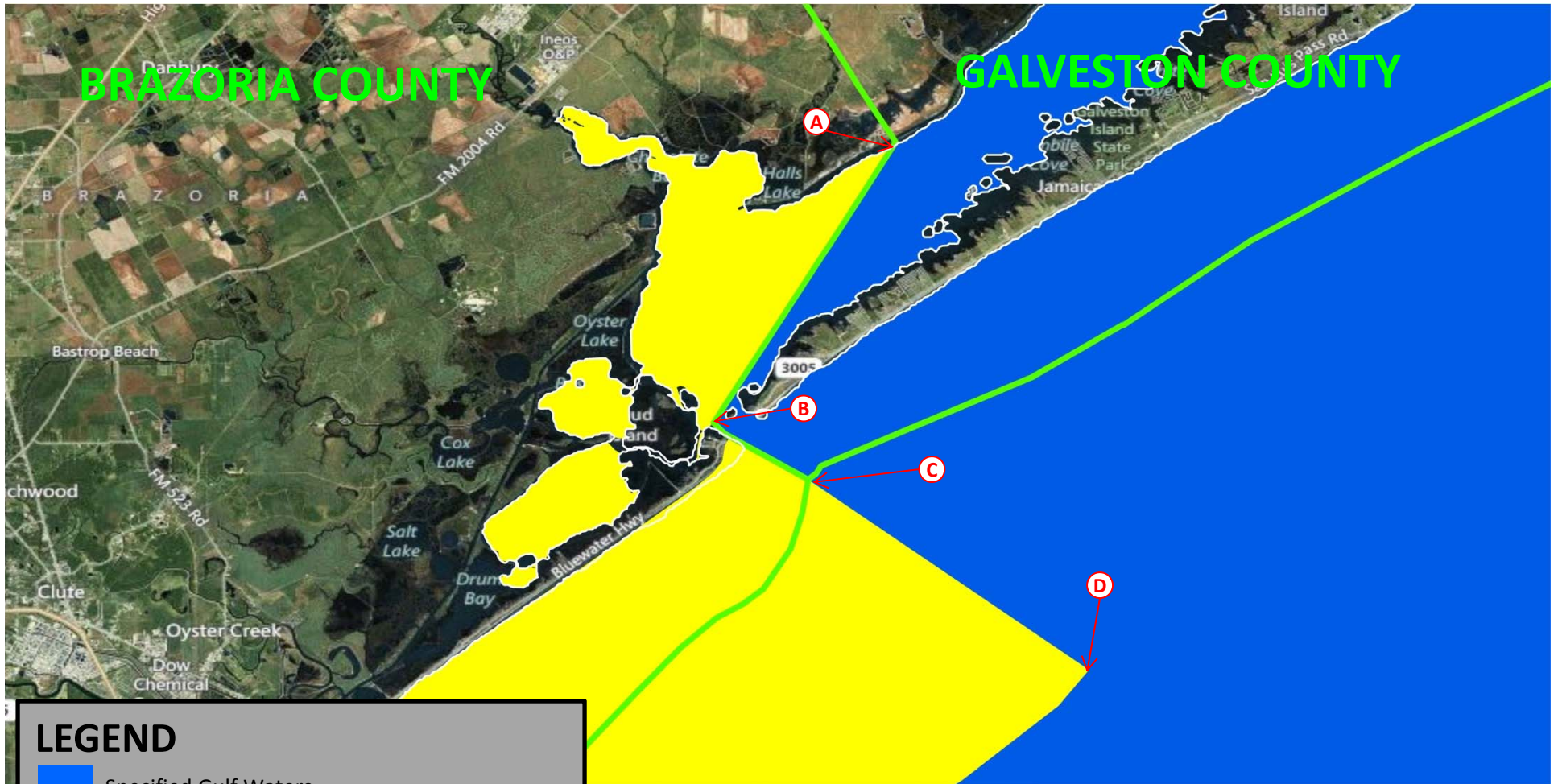
**LEGEND**

- Specified Gulf Waters
- Waters Not Included in Class Definition: State Waters Within 3 Marine Leagues (9 Nautical Miles) of Coasts of Texas Counties Not Included in Gulf Coast Area
- Boundaries of National Territorial Waters

**BOUNDARY POINTS IN GULF OF MEXICO**

Point	Latitude	Longitude	Point	Latitude	Longitude
A	28.206°N	-96.318°W	G	25.703°N	-91.092°W
B	25.956°N	-97.145°W	H	25.669°N	-88.385°W
C	25.971°N	-96.980°W	I	24.933°N	-87.210°W
D	25.997°N	-93.445°W	J	24.941°N	-86.938°W
E	24.734°N	-93.664°W	K	25.207°N	-86.553°W
F	25.445°N	-91.645°W	L	23.925°N	-81.216°W

# Map of Specified Gulf Waters



**LEGEND**

- Specified Gulf Waters
- Waters Not Included in Class Definition: State Waters Within 3 Marine Leagues (9 Nautical Miles) of Coasts of Texas Counties Not Included in Gulf Coast Area
- Boundaries of National Territorial Waters
- County Boundaries

## BOUNDARY POINTS

Point	Latitude	Longitude
A	29.197°N	-95.057°W
B	29.086°N	-95.130°W
C	29.063°N	-95.092°W
D	28.986°N	-94.978°W

# Map of Specified Gulf Waters



**LEGEND**

- Specified Gulf Waters
- Waters Not Included in Class Definition:** State Waters Within 3 Marine Leagues (9 Nautical Miles) of Coasts of Texas Counties Not Included in Gulf Coast Area
- Boundaries of National Territorial Waters
- County Boundaries

**BOUNDARY POINTS**

Point	Latitude	Longitude
A	25.306°N	-80.372°W
B	25.354°N	-80.265°W
C	25.342°N	-80.251°W
D	25.314°N	-80.150°W
E	25.184°N	-79.692°W